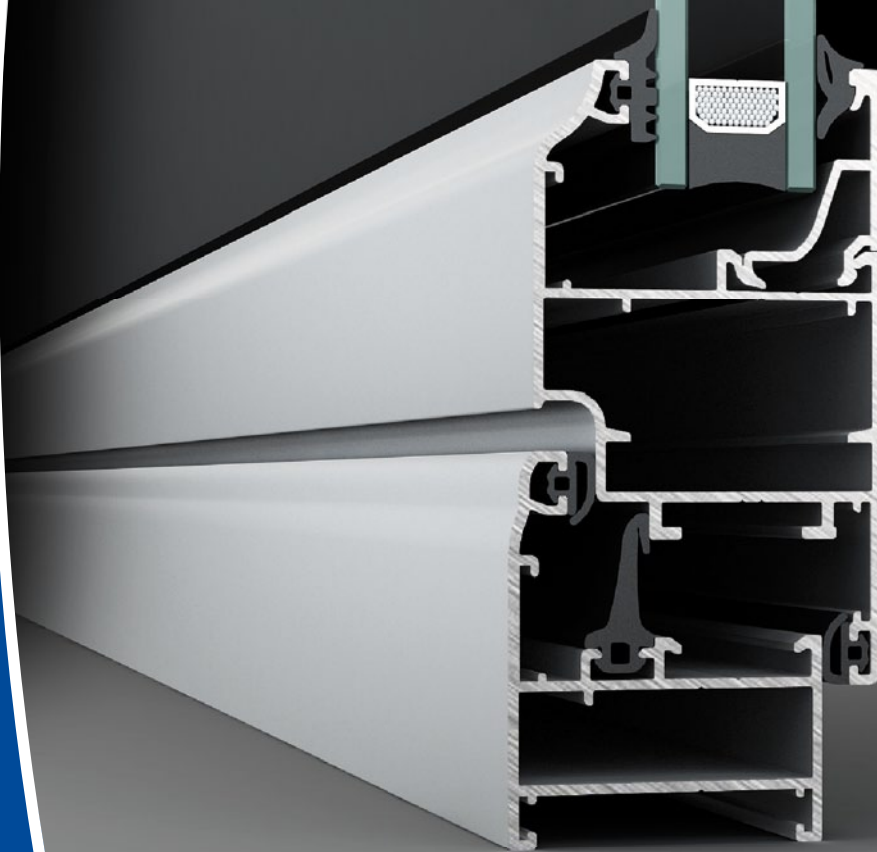


EDITION / VERSİYON
07/2013

WINDOW AND DOOR
PENCERE VE KAPI

SYSTEM 36C
SİSTEM 36C



 **Lorenzoline**[®]
aluminium profile system

System Properties / Sistem Özellikleri

- Modern Design / Modern Dizayn
Frame Height / Et Kalınlığı : 36 mm
Vent Height / Kanat Geniřlięi : 43 mm
Safety Drainage System / Güvenli Tahliye Sistemi
EPDM Gaskets / EPDM Fitol
Glazing From 4 mm to 20 mm
Cam Kullanımı 4 mm'den 20 mm
Euro Groove 1 / Standart Avrupa Kanal 1

Code Logic / Kod Mantığı

36C	101	00
Factory Standard Fabrika Standartı		
Group / Grup		
Title / Seri		

Titles / Seriler

- 36C - System Name / Sistem Adı
07 - Alternative Adapters / Alternatif Adaptörler
08 - Glazing Beats / Cam Çıtalari
09 - Extruded Corner Joints / Pres Köşe Takozu

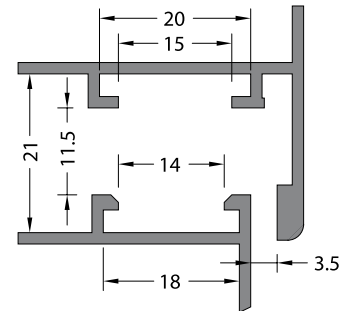
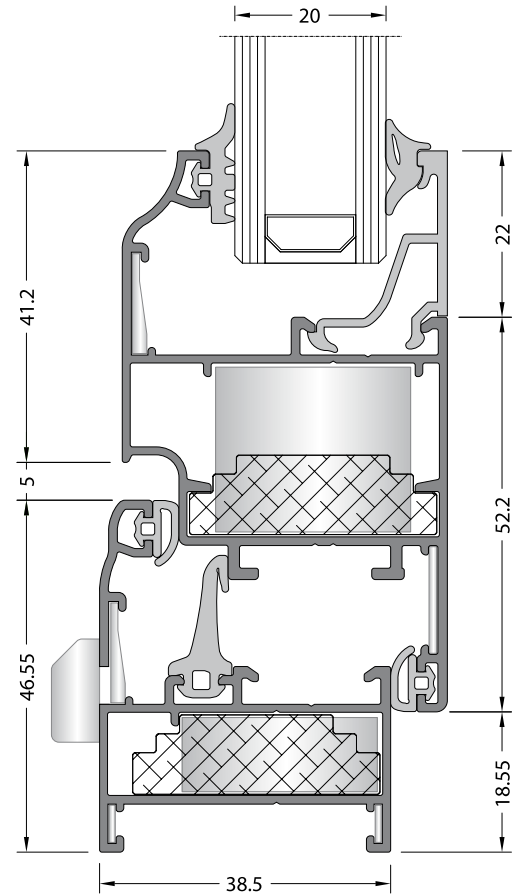
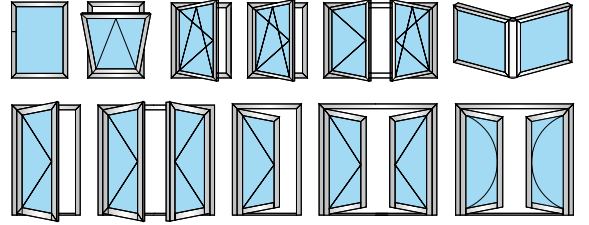
Groups / Gruplar

- 101, 102, ... - Frames / Kasalar
201, 211, ... - Vents / Kanatlar
301, 302, ... - Mullions / Orta Kayıtlar
401, 402, ... - Kick Plates and Adapters / Etek ve Adaptörleri
501, 502, ... - Adapters / Adaptörler

Alloy / Alařım

- The alloys of the aluminium profiles are
6060 and 6063 (AlMgSi 0,5 - F22) based
on EN 12020-2 / 755-9 standards
Alüminyum profil alařımları 6060 ve 6063 (AlMgSi 0,5 - F22)
EN 12020-2 / 755-9 standartlarına uygundur

Window & Door Opportunities / Pencere ve Kapi Seçenekleri

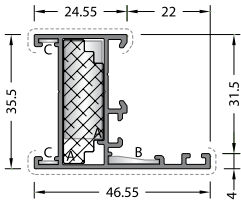


Euro Groove Section1
Avrupa Kanal 1

*All drawings are not scaled.
*Tüm çizimler ölçeksizdir.

Lorenzoline
aluminium profile system





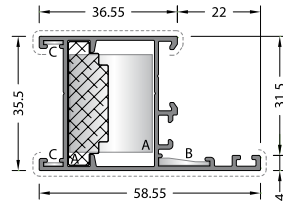
CODE / KOD
36C-101-10

CORNER JOINTS
KÖŞE BAĞLANTILAR

- A CC-101-26.5**
- B LC-122**
- MK-19**

THEORETICAL WEIGHT kg/m
TEORİK AĞIRLIK kg/m
0.531

- DIE-CAST CORNER JOINTS
PİMLİ BAĞLANTILAR
- A LC-1127**
 - B LC-122**
 - A LC-3311**



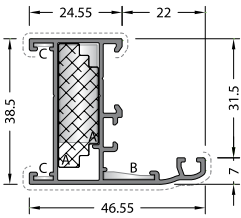
CODE / KOD
36C-102-10

CORNER JOINTS
KÖŞE BAĞLANTILAR

- A CC-103-26.5**
- B LC-122**
- MK-19**

THEORETICAL WEIGHT kg/m
TEORİK AĞIRLIK kg/m
0.618

- DIE-CAST CORNER JOINTS
PİMLİ BAĞLANTILAR
- A LC-2327**
 - B LC-122**
 - A LC-3311**



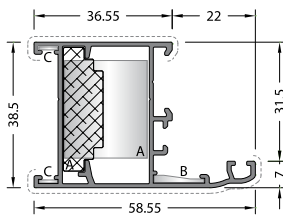
CODE / KOD
36C-111-10

CORNER JOINTS
KÖŞE BAĞLANTILAR

- A CC-101-26.5**
- B LC-122**
- MK-19**

THEORETICAL WEIGHT kg/m
TEORİK AĞIRLIK kg/m
0.558

- DIE-CAST CORNER JOINTS
PİMLİ BAĞLANTILAR
- A LC-1127**
 - B LC-122**
 - A LC-3311**



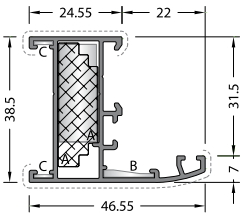
CODE / KOD
36C-112-10

CORNER JOINTS
KÖŞE BAĞLANTILAR

- A CC-103-26.5**
- B LC-122**
- MK-19**

THEORETICAL WEIGHT kg/m
TEORİK AĞIRLIK kg/m
0.663

- DIE-CAST CORNER JOINTS
PİMLİ BAĞLANTILAR
- A LC-2327**
 - B LC-122**
 - A LC-3311**



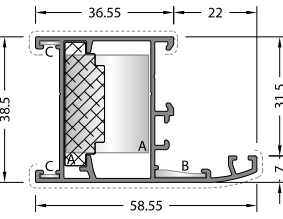
CODE / KOD
36C-121-10

CORNER JOINTS
KÖŞE BAĞLANTILAR

- A CC-101-26.5**
- B LC-122**
- MK-19**

THEORETICAL WEIGHT kg/m
TEORİK AĞIRLIK kg/m
0.558

- DIE-CAST CORNER JOINTS
PİMLİ BAĞLANTILAR
- A LC-1127**
 - B LC-122**
 - A LC-3311**



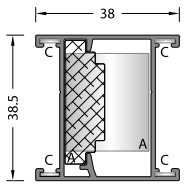
CODE / KOD
36C-122-10

CORNER JOINTS
KÖŞE BAĞLANTILAR

- A CC-103-26.5**
- B LC-122**
- MK-19**

THEORETICAL WEIGHT kg/m
TEORİK AĞIRLIK kg/m
0.663

- DIE-CAST CORNER JOINTS
PİMLİ BAĞLANTILAR
- A LC-2327**
 - B LC-122**
 - A LC-3311**



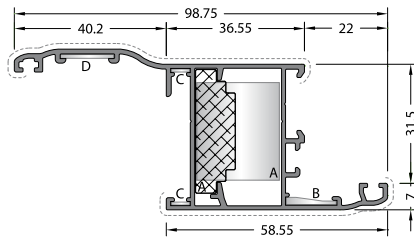
CODE / KOD
36C-109-10

CORNER JOINTS
KÖŞE BAĞLANTILAR

- A CC-103-26.5**
- MK-19**

THEORETICAL WEIGHT kg/m
TEORİK AĞIRLIK kg/m
0.531

- DIE-CAST CORNER JOINTS
PİMLİ BAĞLANTILAR
- A LC-2327**
 - A LC-3311**



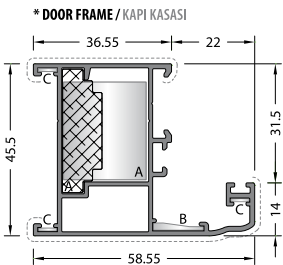
CODE / KOD
36C-171-10

CORNER JOINTS
KÖŞE BAĞLANTILAR

- A CC-103-26.5**
- B LC-122**
- C MK-19**
- MK-20.1**

THEORETICAL WEIGHT kg/m
TEORİK AĞIRLIK kg/m
0.873

- DIE-CAST CORNER JOINTS
PİMLİ BAĞLANTILAR
- A LC-2327**
 - B LC-122**
 - A LC-3311**



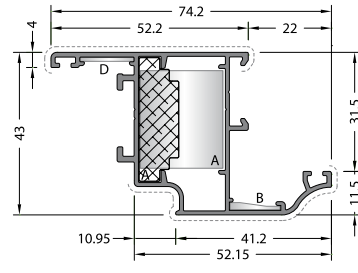
CODE / KOD
36C-117-10

CORNER JOINTS
KÖŞE BAĞLANTILAR

- A CC-103-26.5**
- B LC-122**
- MK-19**

THEORETICAL WEIGHT kg/m
TEORİK AĞIRLIK kg/m
0.808

- DIE-CAST CORNER JOINTS
PİMLİ BAĞLANTILAR
- A LC-2327**
 - B LC-122**
 - A LC-3311**



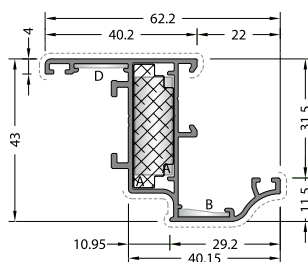
CODE / KOD
36C-212-10

CORNER JOINTS
KÖŞE BAĞLANTILAR

- A CC-103-26.5**
- B LC-122**
- MK-20.1**

THEORETICAL WEIGHT kg/m
TEORİK AĞIRLIK kg/m
0.758

- DIE-CAST CORNER JOINTS
PİMLİ BAĞLANTILAR
- A LC-2327**
 - B LC-122**
 - A LC-3311**



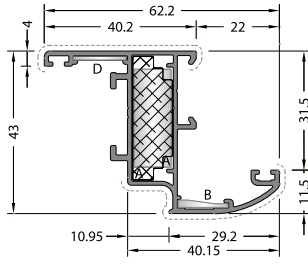
CODE / KOD
36C-211-10

CORNER JOINTS
KÖŞE BAĞLANTILAR

- A CC-101-26.5**
- B LC-122**
- MK-20.1**

THEORETICAL WEIGHT kg/m
TEORİK AĞIRLIK kg/m
0.654

- DIE-CAST CORNER JOINTS
PİMLİ BAĞLANTILAR
- A LC-1127**
 - B LC-122**
 - A LC-3311**



CODE / KOD
36C-221-10

CORNER JOINTS
KOŞE BAĞLANTILAR



A CC-101-26.5



B LC-122



MK-20.1

DIE-CAST CORNER JOINTS
PİMLİ BAĞLANTILAR

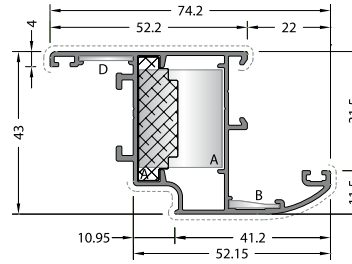


A LC-1127



A LC-3311

THEORETICAL WEIGHT kg/m
TEORİK AĞIRLIK kg/m
0.670



CODE / KOD
36C-222-10

CORNER JOINTS
KOŞE BAĞLANTILAR



A CC-103-26.5



B LC-122



MK-20.1

DIE-CAST CORNER JOINTS
PİMLİ BAĞLANTILAR

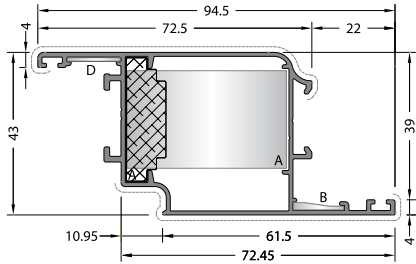


A LC-2327



A LC-3311

THEORETICAL WEIGHT kg/m
TEORİK AĞIRLIK kg/m
0.774



CODE / KOD
36C-204-10

CORNER JOINTS
KOŞE BAĞLANTILAR



A CC-105-26.5



B LC-122



MK-20.1

DIE-CAST CORNER JOINTS
PİMLİ BAĞLANTILAR

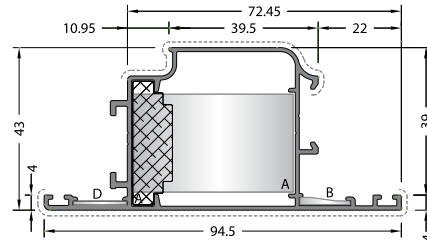


A LC-4327



A LC-3311

THEORETICAL WEIGHT kg/m
TEORİK AĞIRLIK kg/m
0.855



CODE / KOD
36C-205-10

CORNER JOINTS
KOŞE BAĞLANTILAR



A CC-105-26.5



B LC-122



MK-20.1

DIE-CAST CORNER JOINTS
PİMLİ BAĞLANTILAR

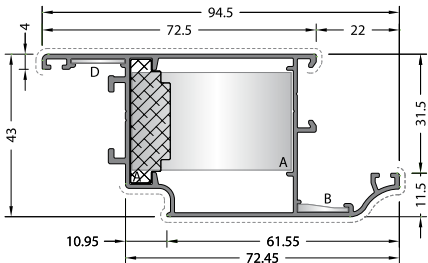


A LC-4327



A LC-3311

THEORETICAL WEIGHT kg/m
TEORİK AĞIRLIK kg/m
0.856



CODE / KOD
36C-214-10

CORNER JOINTS
KOŞE BAĞLANTILAR



A CC-105-26.5



B LC-122



MK-20.1

DIE-CAST CORNER JOINTS
PİMLİ BAĞLANTILAR

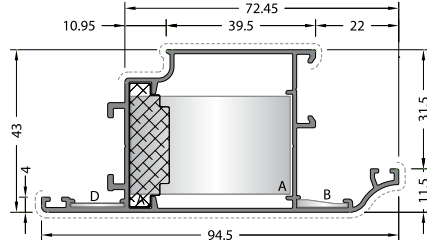


A LC-4327



A LC-3311

THEORETICAL WEIGHT kg/m
TEORİK AĞIRLIK kg/m
0.873



CODE / KOD
36C-215-10

CORNER JOINT
KOŞE BAĞLANTI



A CC-105-26.5



B LC-122



MK-20.1

DIE-CAST CORNER JOINTS
PİMLİ BAĞLANTILAR

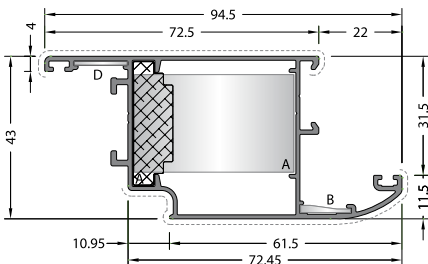


A LC-4327



A LC-3311

THEORETICAL WEIGHT kg/m
TEORİK AĞIRLIK kg/m
0.873



CODE / KOD
36C-224-10

CORNER JOINTS
KOŞE BAĞLANTILAR



A CC-105-26.5



B LC-122



MK-20.1

DIE-CAST CORNER JOINTS
PİMLİ BAĞLANTILAR

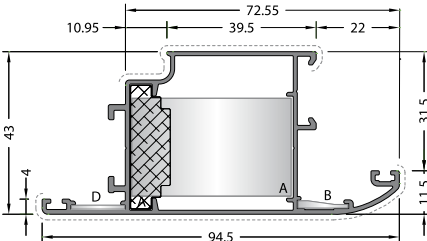


A LC-4327



A LC-3311

THEORETICAL WEIGHT kg/m
TEORİK AĞIRLIK kg/m
0.889



CODE / KOD
36C-225-10

CORNER JOINT
KOŞE BAĞLANTI



A CC-105-26.5



B LC-122



MK-20.1

DIE-CAST CORNER JOINTS
PİMLİ BAĞLANTILAR

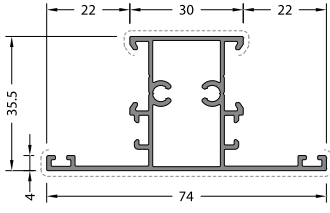


A LC-4327



A LC-3311

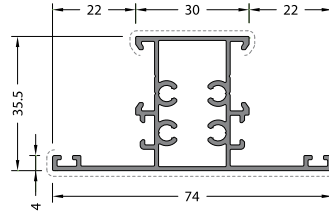
THEORETICAL WEIGHT kg/m
TEORİK AĞIRLIK kg/m
0.889



CODE / KOD
36C-302-10

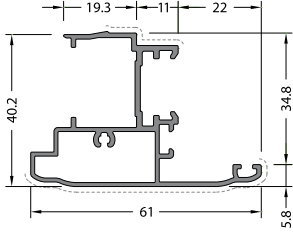
THEORETICAL WEIGHT kg/m
TEORİK AĞIRLIK kg/m
0.740

* FOR OUTSIDE OPENING DOOR PROFILES / DIŞA AÇILIR KANALLAR İÇİN.



CODE / KOD
36C-303-10

THEORETICAL WEIGHT kg/m
TEORİK AĞIRLIK kg/m
0.814



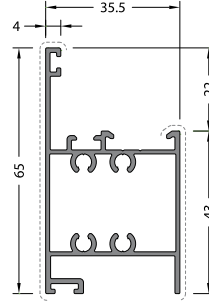
CODE / KOD
36C-511-10

THEORETICAL WEIGHT kg/m
TEORİK AĞIRLIK kg/m
0.705

ADAPTER CAP
ADAPTÖR KAPAĞI



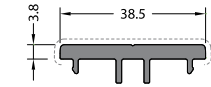
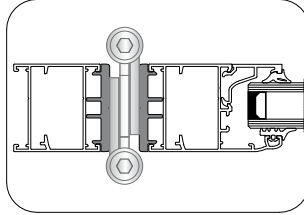
EM36C-511



CODE / KOD
36C-402-10

THEORETICAL WEIGHT kg/m
TEORİK AĞIRLIK kg/m
0.795

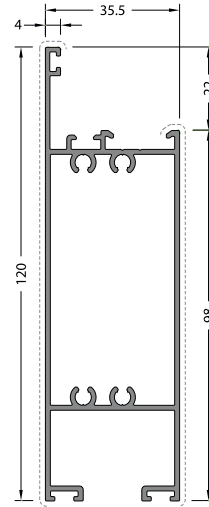
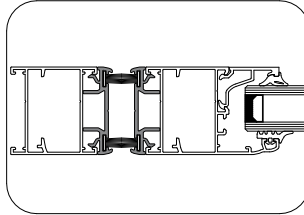
APPLICATION / UYGULAMA



CODE / KOD
36C-570-00

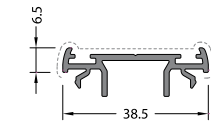
THEORETICAL WEIGHT kg/m
TEORİK AĞIRLIK kg/m
0.472

APPLICATION / UYGULAMA



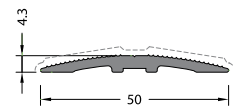
CODE / KOD
36C-404-13

THEORETICAL WEIGHT kg/m
TEORİK AĞIRLIK kg/m
1.307



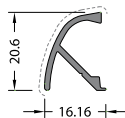
CODE / KOD
36C-571-00

THEORETICAL WEIGHT kg/m
TEORİK AĞIRLIK kg/m
0.329



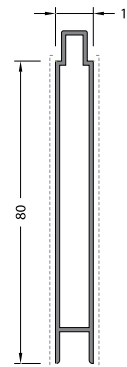
CODE / KOD
20-101-00

THEORETICAL WEIGHT kg/m
TEORİK AĞIRLIK kg/m
0.354



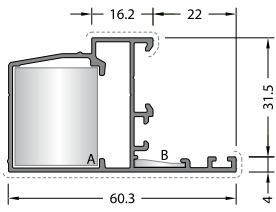
CODE / KOD
07-211-00

THEORETICAL WEIGHT kg/m
TEORİK AĞIRLIK kg/m
0.183



CODE / KOD
07-131-11

THEORETICAL WEIGHT kg/m
TEORİK AĞIRLIK kg/m
0.568



CODE / KOD
36C-561-10

THEORETICAL WEIGHT kg/m
TEORİK AĞIRLIK kg/m
0.605

CORNER JOINTS
KÖŞE BAĞLANTILAR

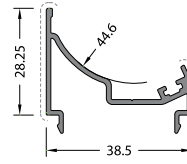


A CC-103-26.5



A LC-2327

B LC-122

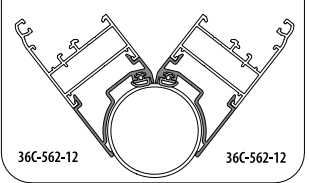


CODE / KOD
36C-562-12

THEORETICAL WEIGHT kg/m
TEORİK AĞIRLIK kg/m
0.379

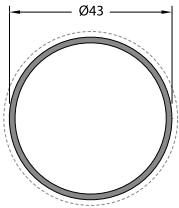
APPLICATION / UYGULAMA

Angle / Açıl **90°~168°**



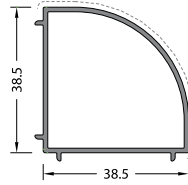
36C-562-12

36C-562-12



CODE / KOD
10-127-015

THEORETICAL WEIGHT kg/m
TEORİK AĞIRLIK kg/m
0.528

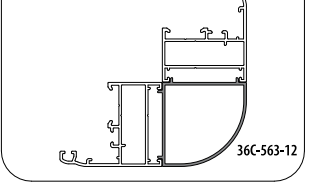


CODE / KOD
36C-563-12

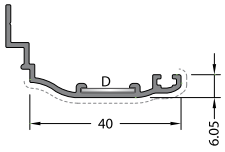
THEORETICAL WEIGHT kg/m
TEORİK AĞIRLIK kg/m
0.467

APPLICATION / UYGULAMA

Angle / Açıl **90°**



36C-563-12



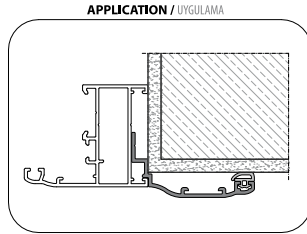
CODE / KOD
07-104-00

THEORETICAL WEIGHT kg/m
TEORİK AĞIRLIK kg/m
0.289

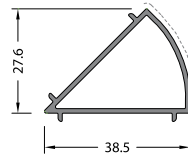
CORNER JOINT
KÖŞE BAĞLANTI



MK-20.1



APPLICATION / UYGULAMA

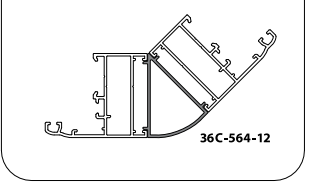


CODE / KOD
36C-564-12

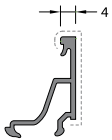
THEORETICAL WEIGHT kg/m
TEORİK AĞIRLIK kg/m
0.361

APPLICATION / UYGULAMA

Angle / Açıl **45°**

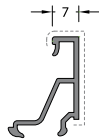


36C-564-12



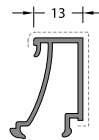
CODE / KOD
08-101-00

THEORETICAL WEIGHT kg/m
TEORİK AĞIRLIK kg/m
0.218



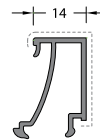
CODE / KOD
08-102-00

THEORETICAL WEIGHT kg/m
TEORİK AĞIRLIK kg/m
0.223



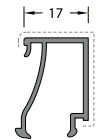
CODE / KOD
08-104-00

THEORETICAL WEIGHT kg/m
TEORİK AĞIRLIK kg/m
0.256



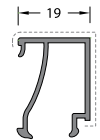
CODE / KOD
08-105-00

THEORETICAL WEIGHT kg/m
TEORİK AĞIRLIK kg/m
0.260



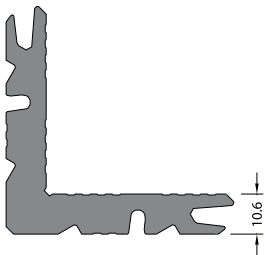
CODE / KOD
08-107-00

THEORETICAL WEIGHT kg/m
TEORİK AĞIRLIK kg/m
0.262



CODE / KOD
08-108-00

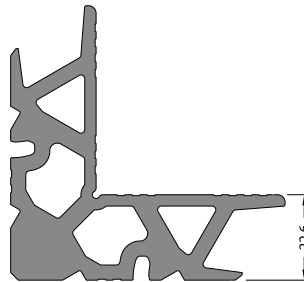
THEORETICAL WEIGHT kg/m
TEORİK AĞIRLIK kg/m
0.270



No visible surface.
Görünen yüzeyi yoktur.

CODE / KOD
09-101-00

THEORETICAL WEIGHT kg/m
TEORİK AĞIRLIK kg/m
2.561



No visible surface.
Görünen yüzeyi yoktur.

CODE / KOD
09-103-00

THEORETICAL WEIGHT kg/m
TEORİK AĞIRLIK kg/m
3.690



No visible surface.
Görünen yüzeyi yoktur.

CODE / KOD
09-105-00

THEORETICAL WEIGHT kg/m
TEORİK AĞIRLIK kg/m
5.453

CORNER JOINTS / KÖŞE BAĞLANTILAR

ACCESSORY CODE AKSESUAR KOD	DRAWING ÇİZİM	APPLICATION PROFILES ÇALIŞTIĞI PROFİL	APPLICATION DETAIL UYGULAMA DETAY
LC-1127		36C-101-10 36C-111-10 36C-121-10 36C-211-10 36C-221-10	
LC-2327		36C-102-10 36C-112-10 36C-122-10 36C-171-10 36C-117-10 36C-109-10 36C-212-10 36C-222-10 36C-561-10	
LC-4327		36C-204-10 36C-214-10 36C-224-10 36C-205-10 36C-215-10 36C-225-10	
LC-3311		All Frames and Sashes Tüm Kasalar ve Kanatlar	
LC-122		All Frames and Sashes and 36C-561-10 Tüm Kasalar ve Kanatlar ve 36C-561-10	
MK-19		All Frames Tüm Kasalar	
MK-20.1		All Sashes and 36C-171-10 Tüm Kanatlar ve 36C-171-10	

PRESS CORNER JOINTS / PRES KÖŞE BAĞLANTILAR

ACCESSORY CODE AKSESUAR KOD	DRAWING ÇİZİM	PROFILE CODE PROFİL KOD	QUANTITY MİKTAR	CUTTING SIZE KESİM ÖLÇÜSÜ	APPLICATION PROFILES ÇALIŞTIĞI PROFİL	APPLICATION DETAIL UYGULAMA DETAY
CC-101-26.5		09-101-00	60 pieces Adet	26.5 mm	36C-101-10 36C-111-10 36C-121-10 36C-211-10 36C-221-10	
CC-103-26.5		09-103-00	50 pieces Adet	26.5 mm	36C-102-10 36C-112-10 36C-122-10 36C-109-10 36C-171-10 36C-117-10 36C-212-10 36C-222-10 36C-561-10	
CC-105-26.5		09-105-00	25 pieces Adet	26.5 mm	36C-204-10 36C-214-10 36C-224-10 36C-205-10 36C-215-10 36C-225-10	

ACCESSORIES / AKSESUARLAR

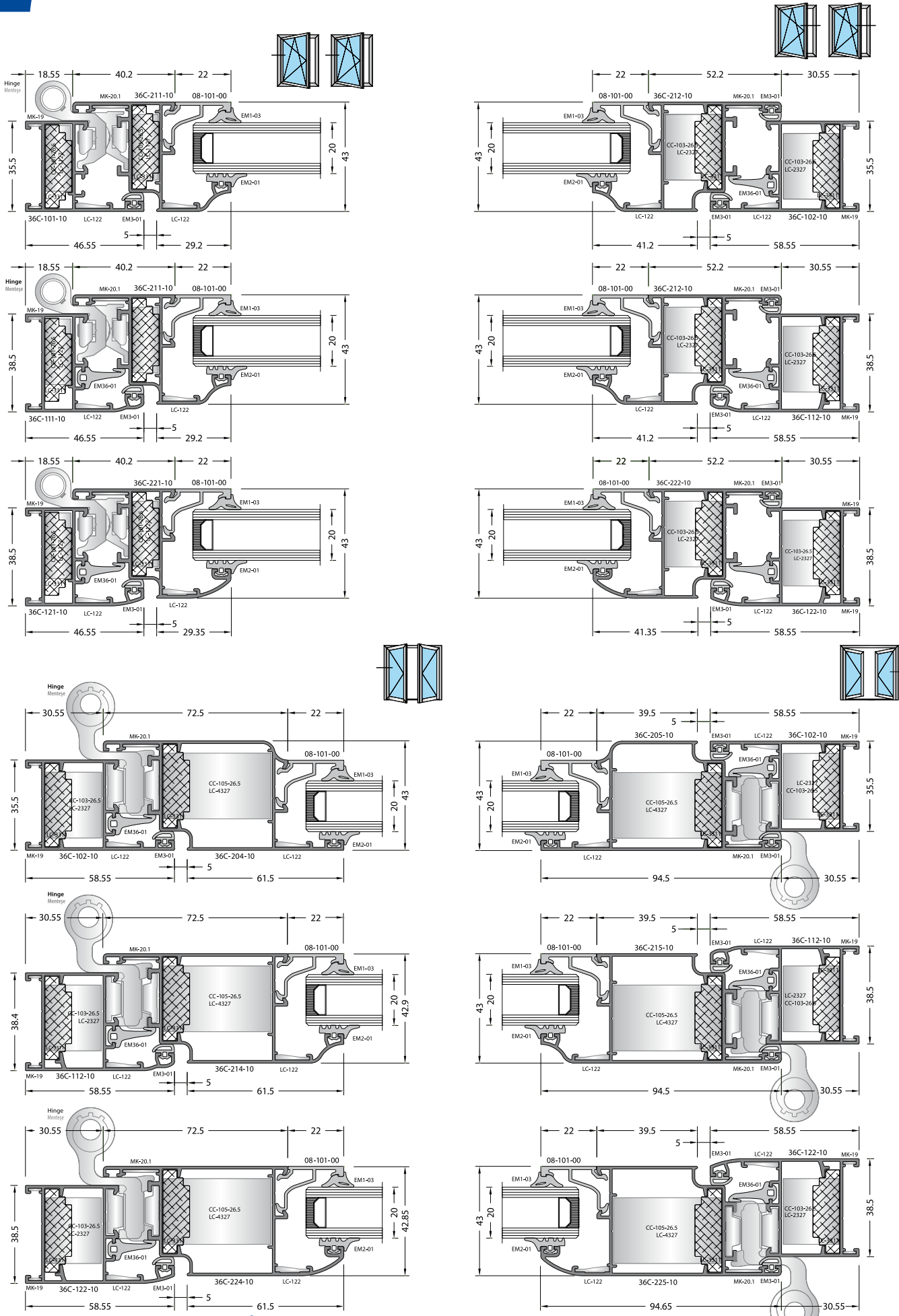
ACCESSORY CODE AKSESUAR KOD	DRAWING ÇİZİM	DESCRIPTION AÇIKLAMA	APPLICATION PROFILES ÇALIŞTIĞI PROFİL	APPLICATION DETAIL UYGULAMA DETAY
EM36C-511		Adapter Cap Adaptör Kapağı	36C-511-10	
EM15-200		Polyamid Rod Profile (Euro Section1) Polyamid Tij Profili (Avrupa Kanal1)	-	
EM10-01 (White/ Beyaz)		Drainage Cap Tahliye Kapağı	-	
EM10-02 (Black/ Siyah)				
EM10-03 (Brown/ Kahverengi)				
EM10-04 (Gray/ Gri)				
EM10-05 (Light Caffee/ Açık Kahve)				

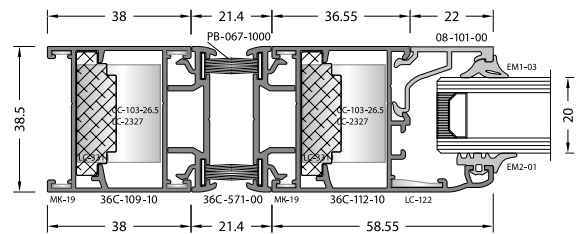
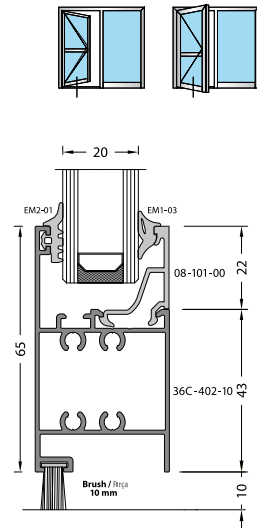
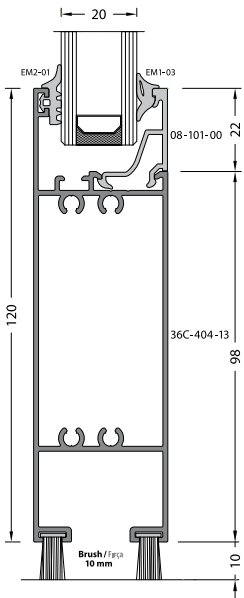
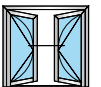
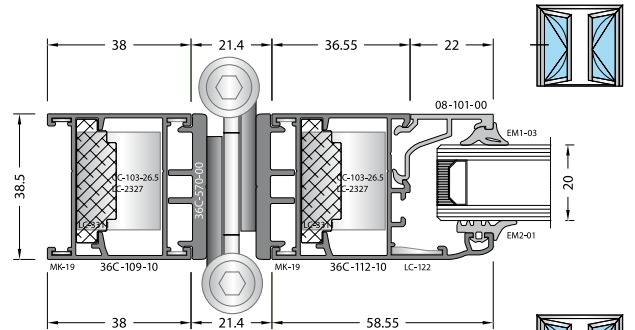
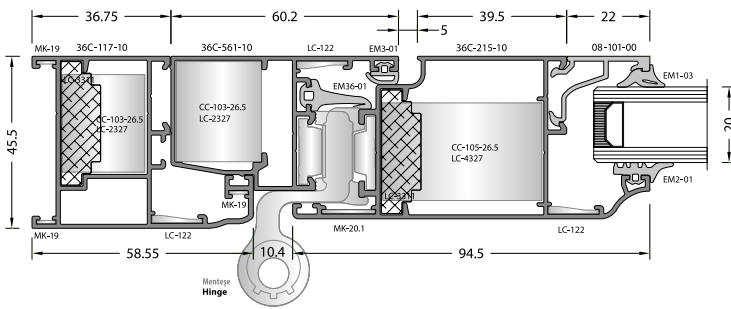
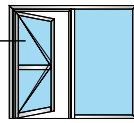
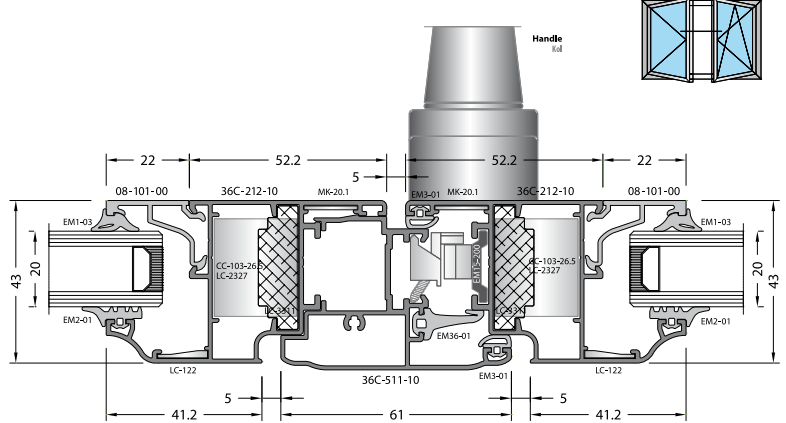
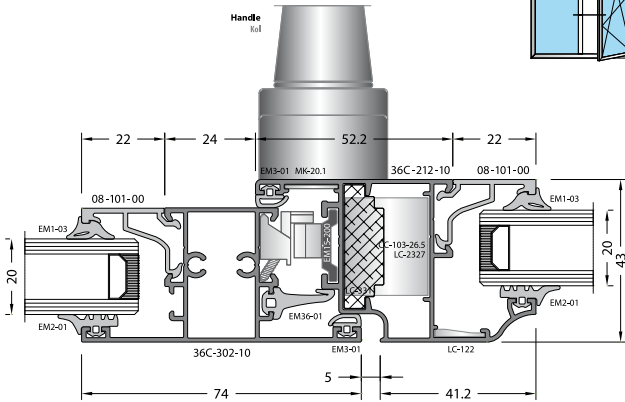
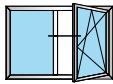
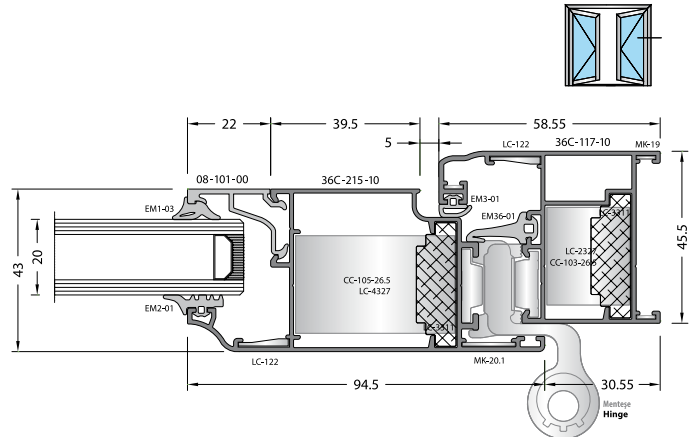
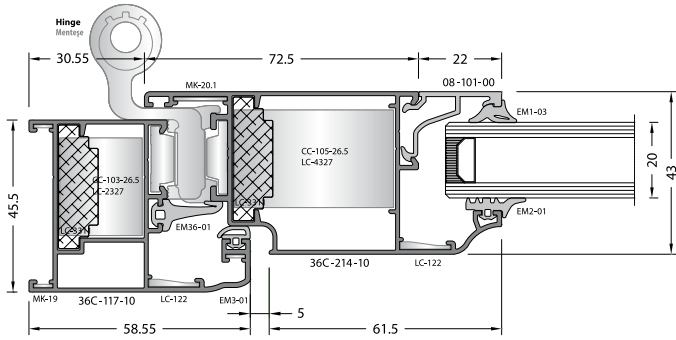
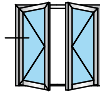
GASKETS / FİTİLLER

CODE KOD	DRAWING ÇİZİM	APPLICATION UYGULAMA	DESCRIPTION AÇIKLAMA	WEIGHT kg/m AĞIRLIK	PACKAGE QUANTITY PAKET MİKTARI
EM1-02			GLAZING GASKET INSIDE İÇ CAM FİTİLİ (EPDM)	0.050	300 m
EM1-03			GLAZING GASKET INSIDE İÇ CAM FİTİLİ (EPDM)	0.060	250 m
EM1-04			GLAZING GASKET INSIDE İÇ CAM FİTİLİ (EPDM)	0.070	215 m
EM2-01			GLAZING GASKET OUTSIDE DIŞ CAM FİTİLİ (EPDM)	0.052	285 m
EM3-01			ACOUSTICAL GASKET BİNİ FİTİLİ (EPDM)	0.032	465 m
EM36-01			CENTRAL GASKET TOZLUK FİTİLİ (EPDM)	0.090	166 m
PB-067-1000			BRUSH FİRÇA	-	150 m

GLAZING COMBINATIONS / CAM KOMBİNASYONLARI

GLAZING THICKNESS CAM KALINLIĞI	GLAZING GASKET INSIDE İÇ CAM FİTİLİ	GLAZING GASKET OUTSIDE DIŞ CAM FİTİLİ	GLAZING BEAD CAM ÇİTASI
4 mm	EM1-04	EM2-01	08-108-00
5 mm	EM1-03	EM2-01	08-108-00
6 mm	EM1-02	EM2-01	08-108-00
	EM1-04	EM2-01	08-107-00
8 mm	EM1-02	EM2-01	08-107-00
10 mm	EM1-03	EM2-01	08-105-00
	EM1-04	EM2-01	08-104-00
12 mm	EM1-02	EM2-01	08-104-00
17 mm	EM1-03	EM2-01	08-102-00
20 mm	EM1-03	EM2-01	08-101-00





Produced by 

